

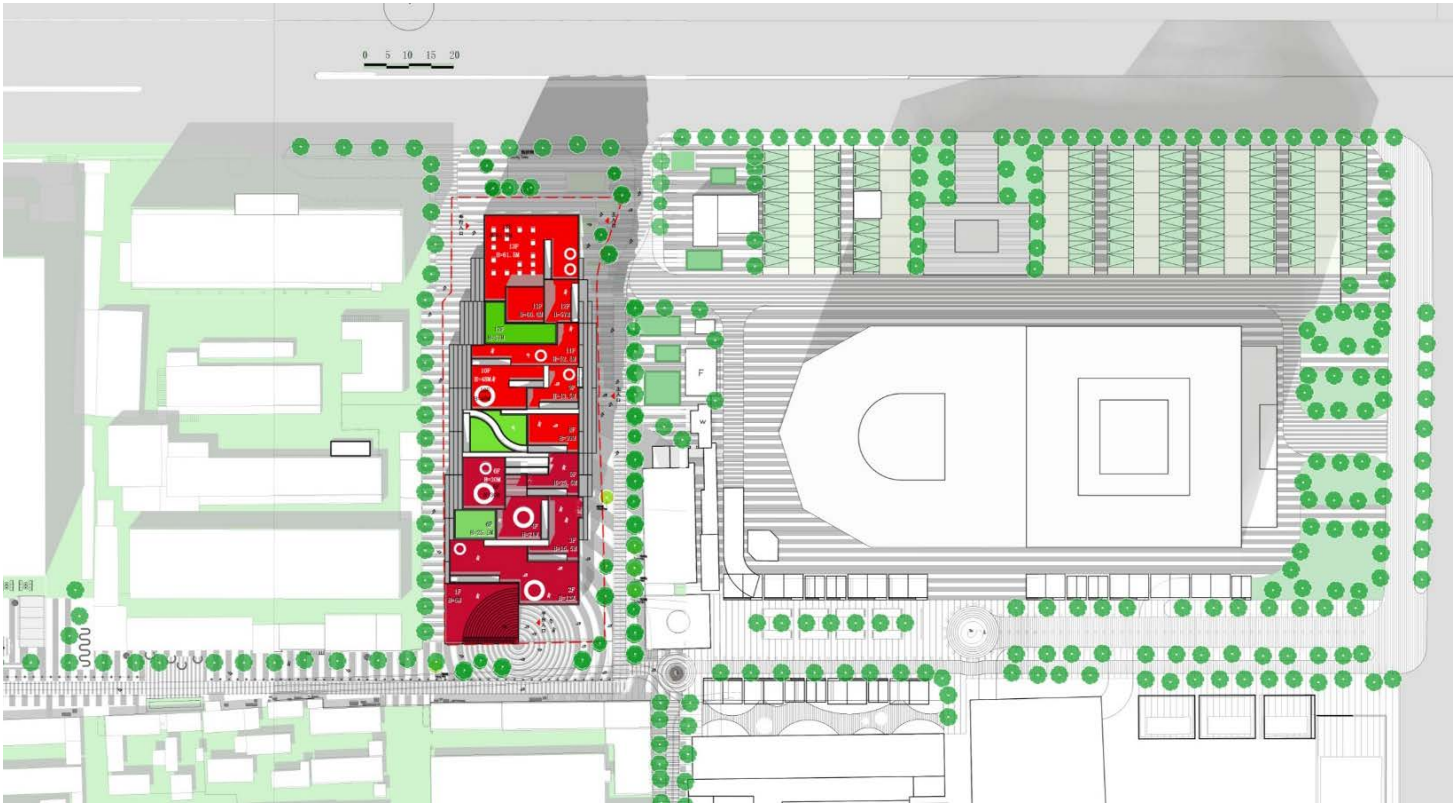


SINO DENMARK INNOVATION CENTER

Client Gehua Group
Services Architecture Design
Location Beijing
Scale 0.4HA
Time 2017
Status Architecture Design

Sino-Denmark Innovation Center, located at the north side of Beijing Qinglong Hutong and next to the North Second Ring Road, is well connected with the major roads network in Beijing. We bring together the best of minds from China and Denmark to equip Qinglong Hutong with high-quality active urban space and sponge city solution. Through passive design strategies, we set the highest standards based on Danish Future Year 2020 Regulations for indoor climate and daylight environment to build a platform for Sino-Denmark collaboration and innovation, and to show the best practice of sustainable development and livable cities.





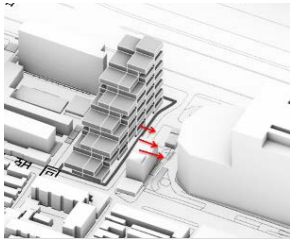
Project Master Plan



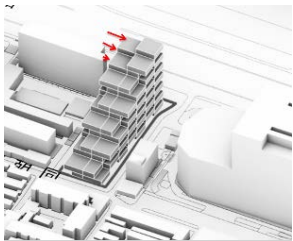
Urban access



Visual Connection



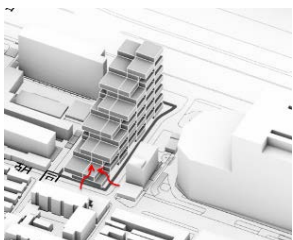
Expand to soften transition + mitigation



Set back to fit red line NW corner



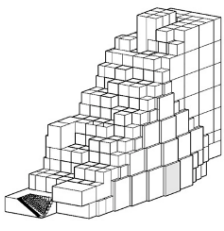
Set back to make urban activity square



Make Theatre podium for access/sitting

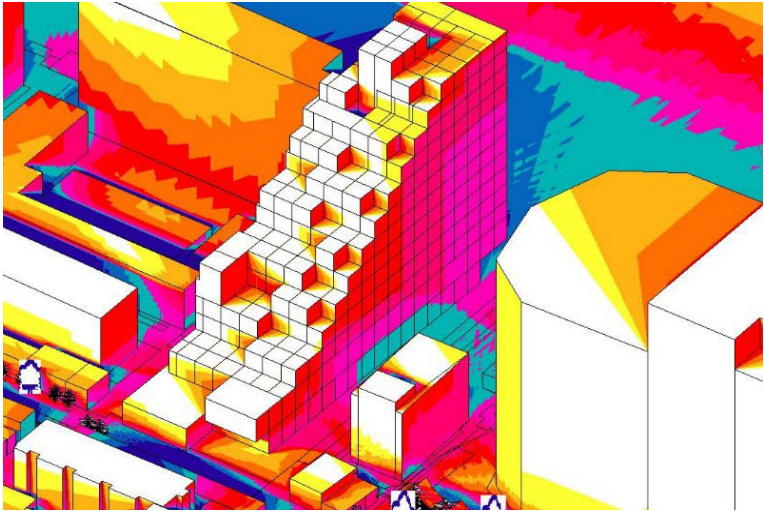


Multiple activity and steps

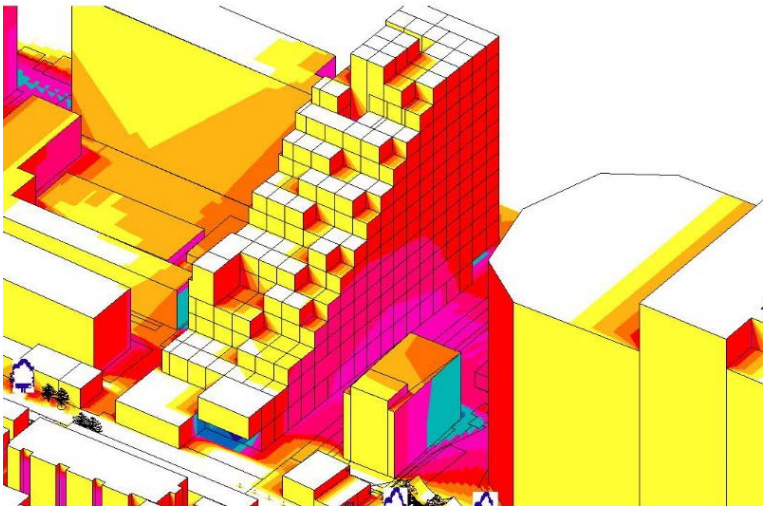


SINO DENMARK INNOVATION

Modify Mass



December 22nd accumulated hours/shadow effect 8.00-16.00



June 22nd accumulated hours/shadow effect 8.00-16.00

