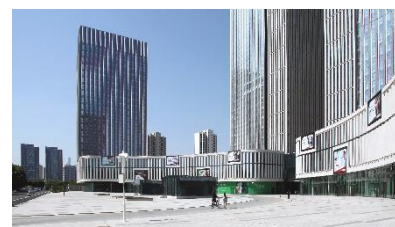
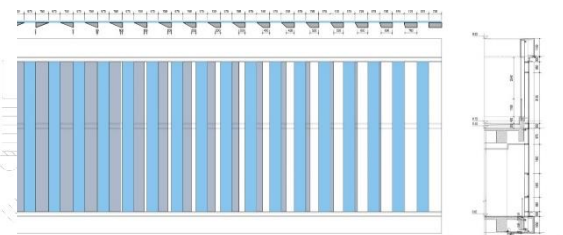
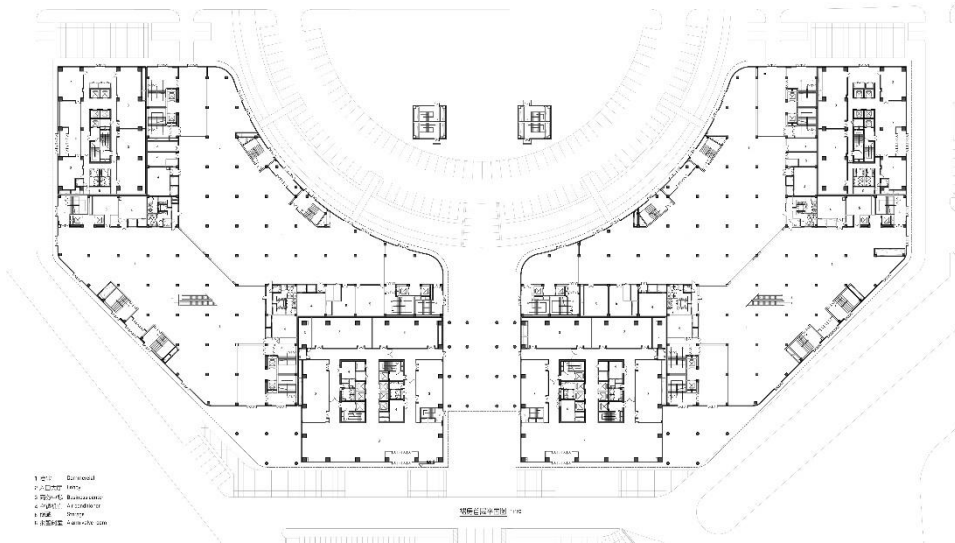
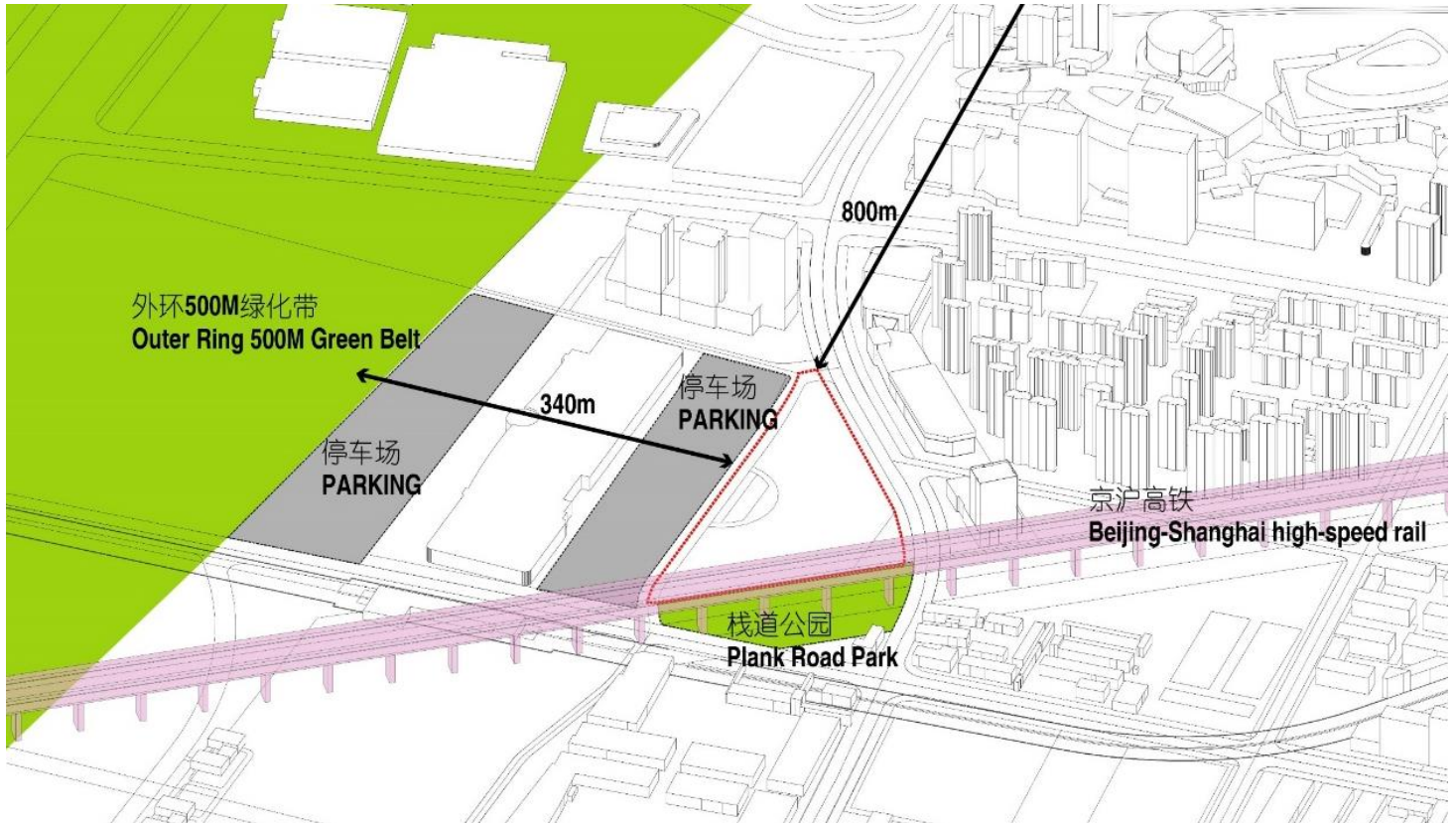


NEW CITY CENTER

Client	Tianjin Zhongbei Government
Services	Architectural Design/ Public & Culture
Location	Tianjin
Scale	3.53 HA
Gfa	138,000 m ²
Time	2010
Status	Completed

New City Center, located at the prime area of Zhongbei Town in Xiqing District, combines high-end office and mass consumption. Based on the development plan of Zhongbei Town, we design a comprehensive shopping and office center integrated with surrounding community to provide abundant services and entertainment for local residents. These four office buildings of New City Center are independent with each other and separated from the commercial podium. The lobby at the entrance is tall and large, showing the center of its tower. The internal space of office buildings is open and column-free with a height of 4.4 meters, which satisfies the need for daylight and provides a broad view.





石材/Stone

铝合金压板/Alu Pressure Plate

双中空安全玻璃/Double Glazing Safety Glass

楼板/Slab

不透明玻璃嵌板/Untransparent glazing

吊顶/Suspended ceiling

石材/Stone

铝合金压板/Alu Pressure Plate

石材/Stone

双中空安全玻璃/Double Glazing Safety Glass

室外地平/Ground

