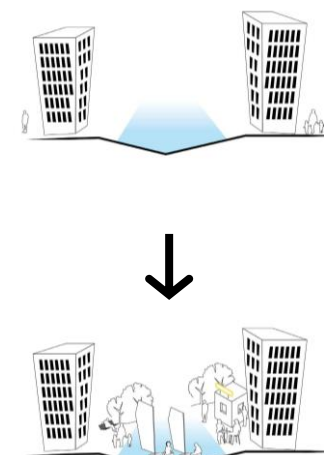
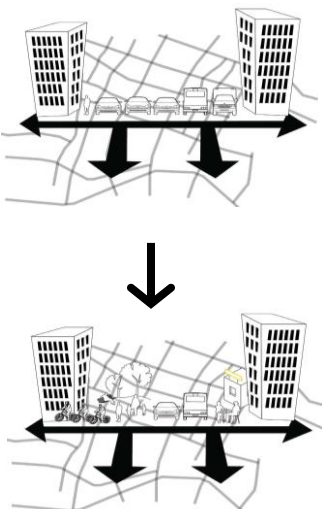
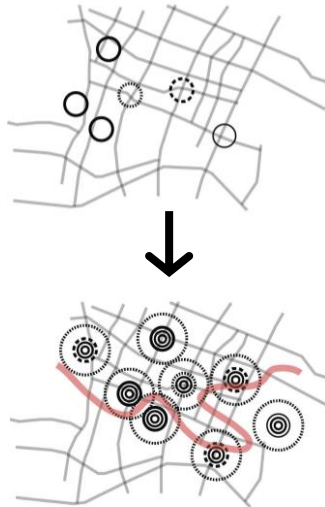
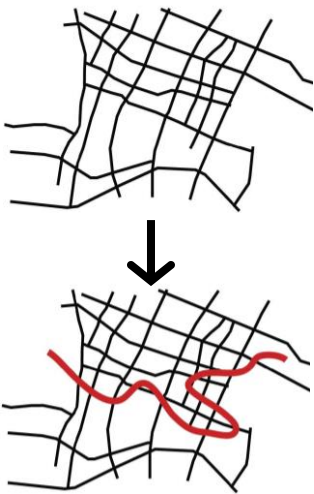




YIXING ACTIVE LAKE LOOP

Services	Urban Planning/Urban Renewal/Livable City
Location	Yixing
Client	Yixing Government, Jiangsu Province
Scale	620 Hectares
Collaboration	Kragh & Berglund Landscape (Copenhagen)
Time	2016

In the overall planning of Dongjiuhu Lake, we use the urban planning concepts of Copenhagen for reference, introduce bicycle culture and expand slow traffic area. We also apply the "Grey, Green and Blue" ecological development mode of Copenhagen into China to protect local ecological environment and create dynamic waterfront urban space. Based on our simple and sustainable design concept, Yixing can re-embrace the water. We adapt green and sustainable upgrade and improvement mode to improve the quality of public space and create waterfront urban space for Yibin residents. Meanwhile, this design will lead people to change their old ideas and experience a new lifestyle, integrate health, ecology, nature and energy into urban culture, and realize green development of this Jiangnan waterside village.



OVERALL CONCEPT





AERIAL VIEW OF XUHUI RIVERSIDE



THEME PARK RENDERINGS



THEME PARK RENDERINGS



RENDERING OF CENTRAL AREA

