



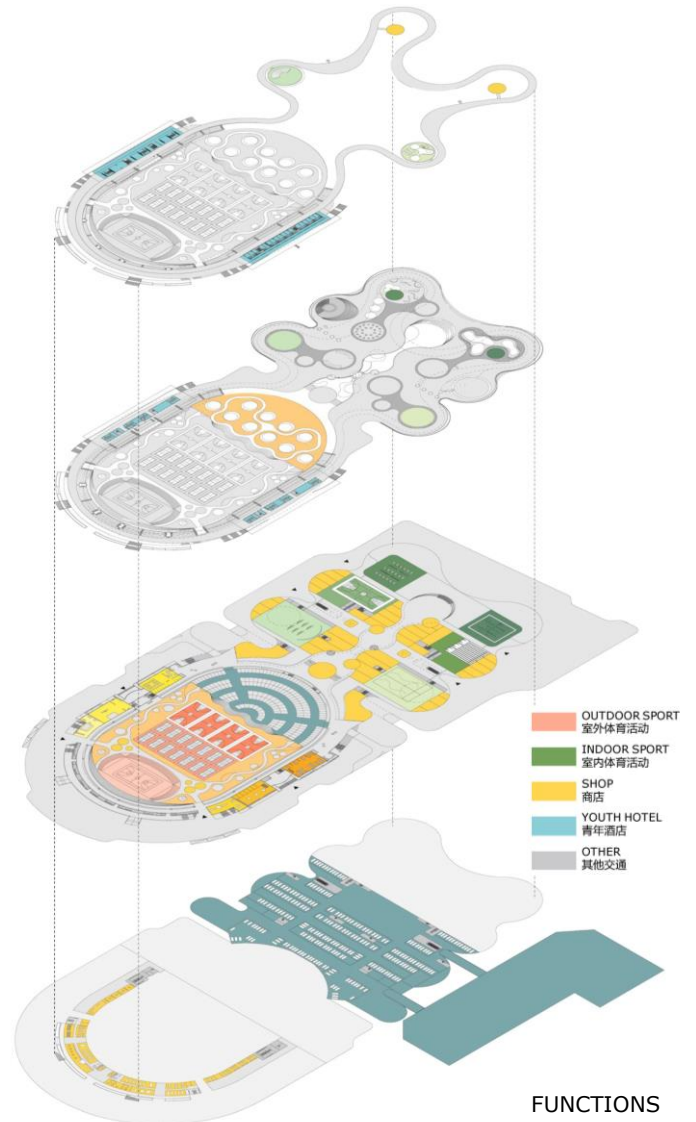
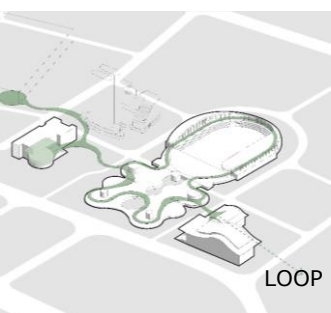
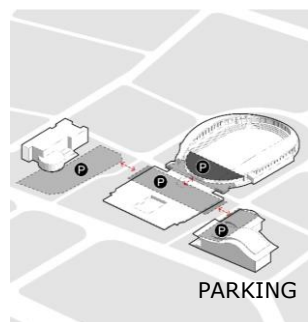
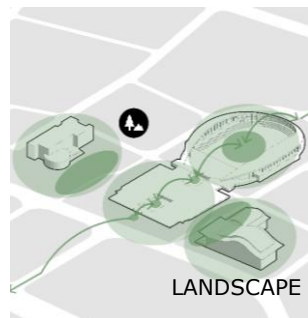
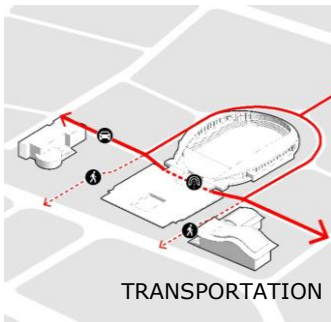
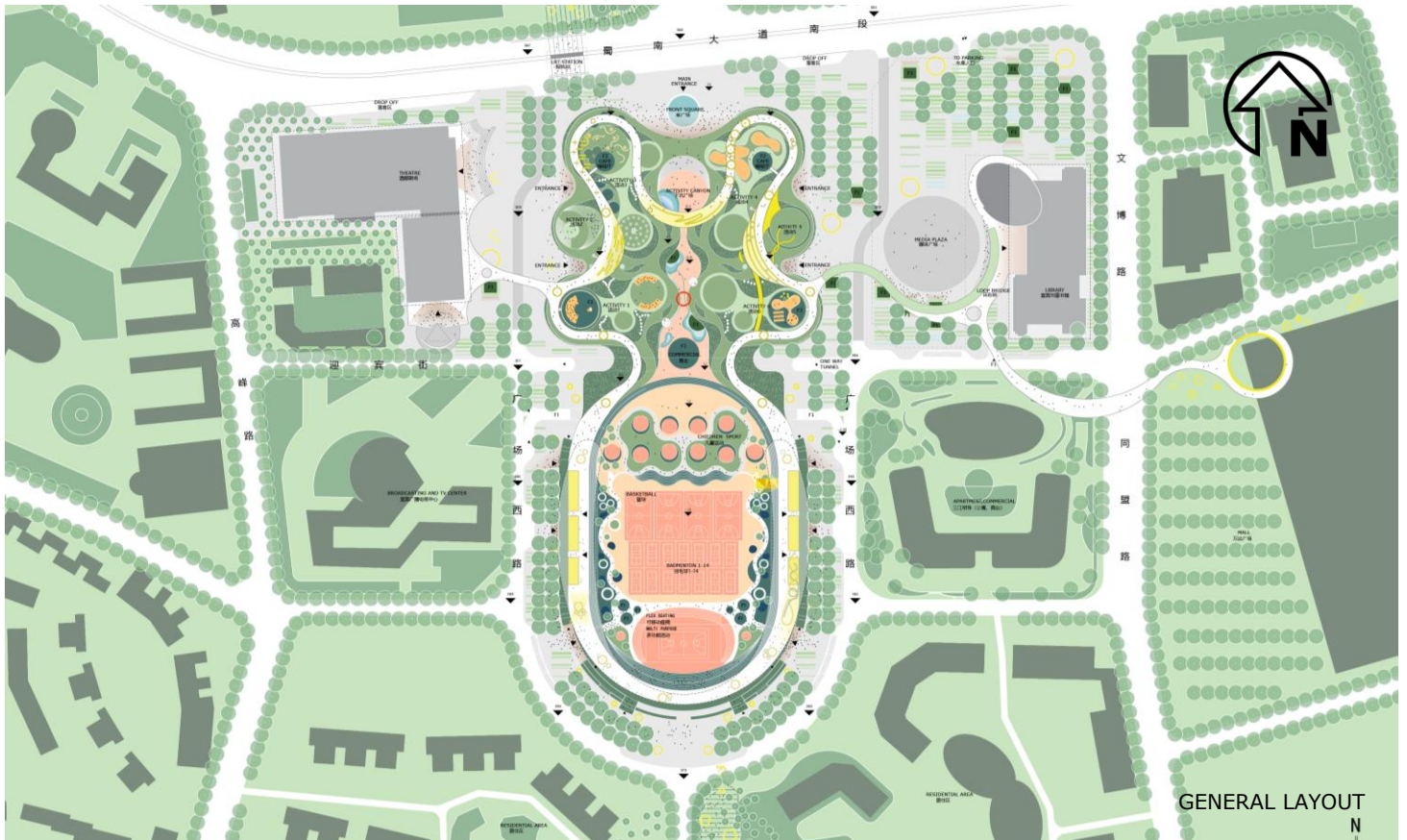
# YIBIN SOUTH BANK CULTURE AND SPORTS CENTER

Client	Yibin Natural Resources and Planning Bureau/ Yibin Institute of Urban and Rural Planning and Design
Services	Urban Renewal/Urban Design/Architecture Design
Location	Yibin, Sichuan
Scale	17.73 Hectares
Collaborator	HHDesign/Tianjin Jiujie Investment Management Co., Ltd.
Time	2021
Status	In Process

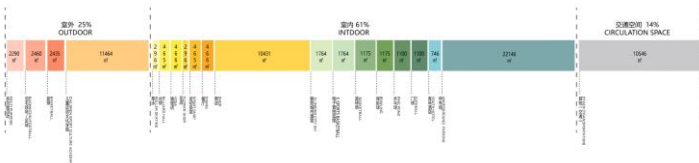
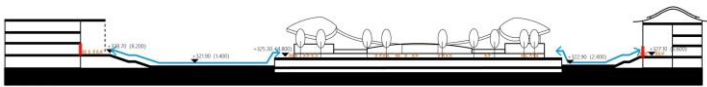
Yibin South Bank Cultural and Sports Center is located at the CBD core area on the south bank in the city of the intersection of the three Rivers (Jinshajiang River, Minjiang River and the Yangtze River). The north side of the Cultural and Sports Center is the municipal government; the south side is mainly for residential functions; and its west and east sides are public services, the overall supporting facilities are relatively perfect. Meanwhile, the surrounding spatial structure around the project is relatively stable, with two main roads: ShuNan Avenue to the North and QiXing Road to the South. Positioned as "the Center of South Sichuan and the Benchmark of the Province", integrating reading, education, exchange, training, performance, exhibition, cultural innovation and fitness functions into its comprehensive cultural circle, the Yibin South Bank Cultural and Sports Center will become the new innovative training base for mass culture, sports and art, the leisure exhibition and art center for citizens to participate and experience, the sharing camp for various types of culture and art, the intercity cultural exchange place and the creative art park for public and artists in the future. As the benchmark project of the regional planning stock market, it will become the new focus in the urban renewal of Yibin.











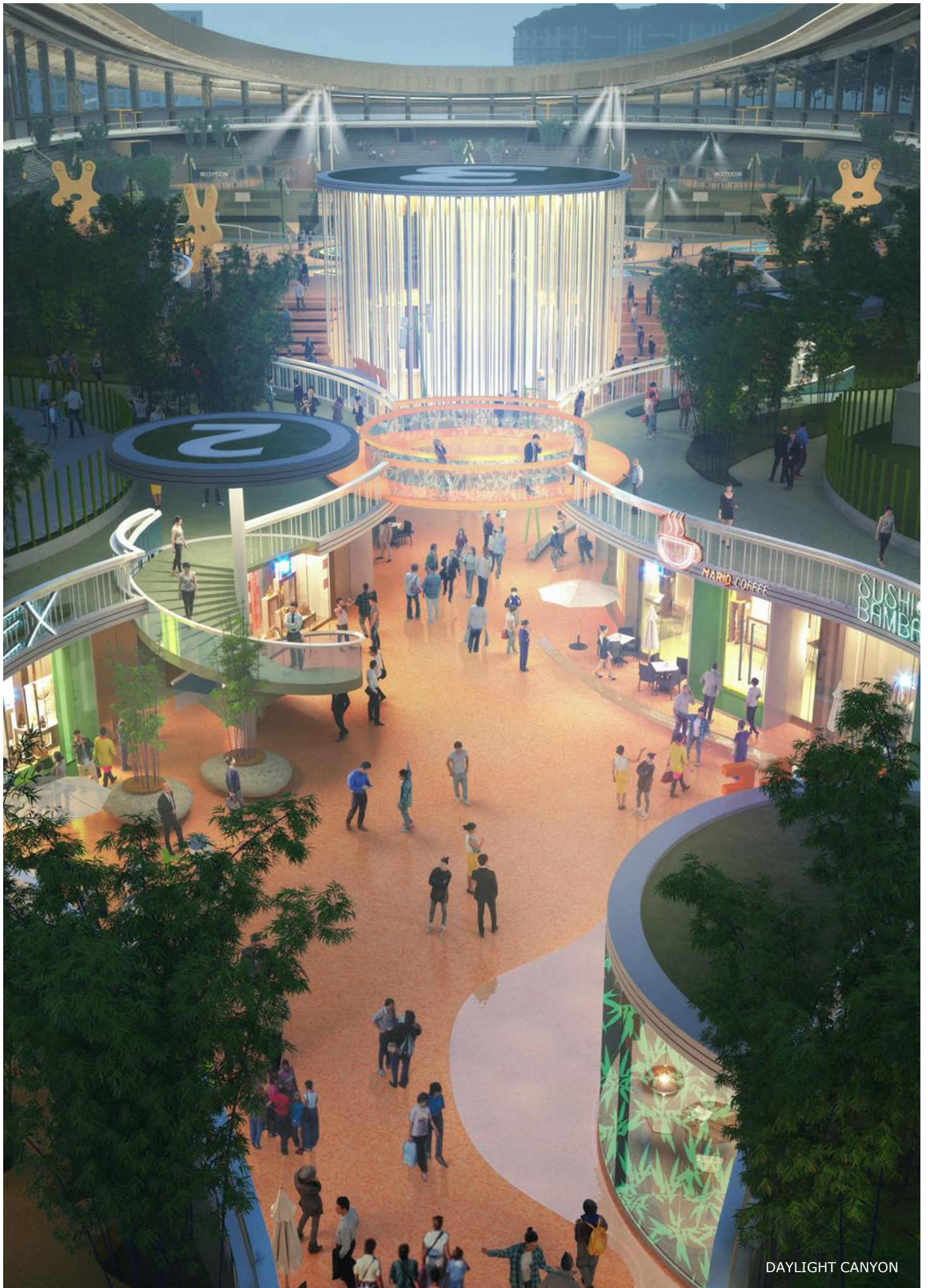
With the framework of "grey green blue +", the synergy effect of multi-dimensional urban integration is realized from three aspects of transportation system optimization, public space construction and resilient urban development. Taking "Park City" as the basic planning and design concept, this paper puts forward the overall layout of green space landscape system, makes full use of the open space of municipal square and other space within the planning scope to set up landscape elements, establishes a green space system with collection and release, and the combination of point, line and surface, and starts with the overall planning of urban landscape style and public activity system, so as to strengthen various important functions in the region. Through the connection and organization of landscape area and landscape node, we can build a complete park landscape and public space system.











DAYLIGHT CANYON